



Noleen Dunn
084 803 9972
noleendunn@dpg.co.za

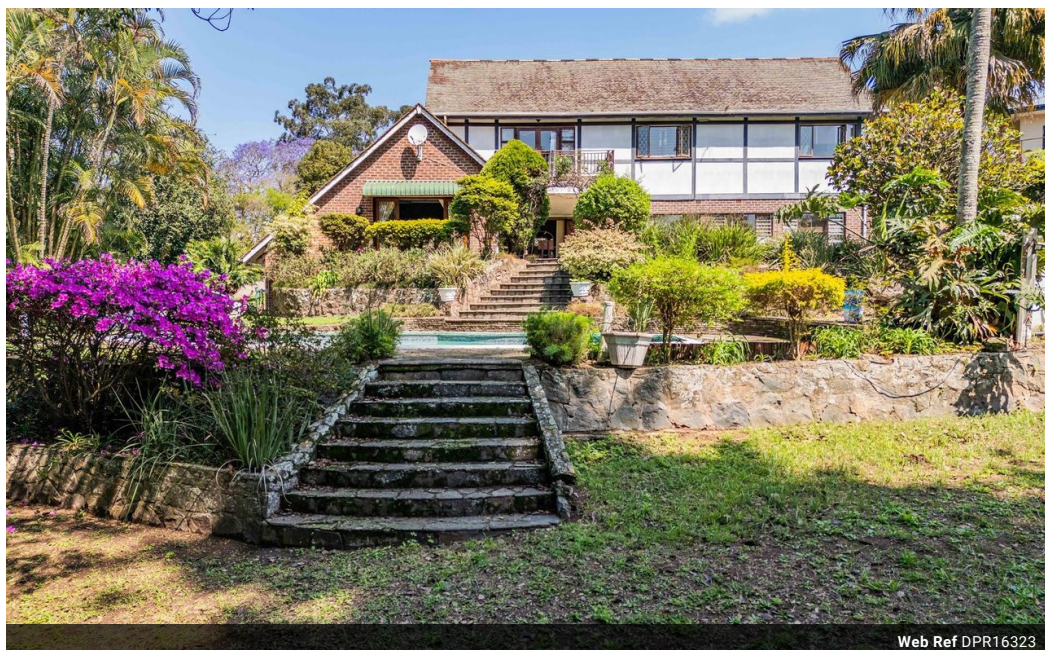


Nicci Arnott
071 887 0870
nicciarnott@dpg.co.za

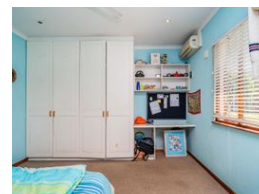
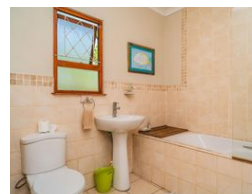
Contact Westville

031 2669091

Shop 1, Gordana Court,
22/26 Salisbury Avenue,
Westville



Web Ref DPR16323



R2,495,000

5 4 2

Monthly Bond Repayment R25,753.10
Calculated over 20 years at 11% with no deposit.

Transfer Costs R115,320.00 **Bond Costs** R38,415.00
These calculations are only a guide. Please ask your conveyancer for exact calculations.

Monthly Rates R2,258

FAMILY HOME IN COWIES HILL!

This gorgeous family home is perfectly situated in the secure and sought-after Cowies Hill Estate! If you're looking for space, versatility, and a prime location, this property checks all the boxes. With proximity to top schools, shopping centers, and easy access to highways, this is the ideal setting for family living.

Having been loved by its owners for over 22 years, it's now time for a new family to bring fresh energy to this splendid residence. Spanning a generous 400 sqm under roof and set on 1,980 sqm of land, there's ample room for everyone to enjoy.

As you step inside the main house, you are greeted by open spaces that create a warm and inviting flow. The dining area seamlessly connects to a charming farmhouse-style kitchen, featuring abundant cupboard space, a gas stove, and an electric oven. The dining area...

Features

Pets Allowed	Yes		
Interior		Exterior	Sizes
Bedrooms	5	Garages	2
Bathrooms	4	Carports / Parkings	6
Kitchens	1	Security	Yes
Recep. Rooms	3	Dom. Accom.	1
Studies	1	Pool	Yes
Furnished	No	Views	True
			Floor Size 400m ²
			Land Size 1,980m ²

