

Ningi Ngwenya
071 301 8200
ningingwenya@dpg.co.za

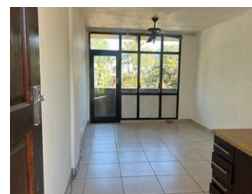
Contact Pinetown

031 8229071

39 Glenugie Road
Pinetown



Web Ref DPR15073



R545,000

2 1

Monthly Bond Repayment R5,625.43
Calculated over 20 years at 11% with no deposit.

Transfer Costs R21,217.00 **Bond Costs** R15,795.00
These calculations are only a guide. Please ask your conveyancer for exact calculations.

Monthly Levy R1,250

INVESTORS DREAM - CENTRAL PINETOWN

Perfectly located, walk to all amenities i.e. Pine Crest Mall, Taxi/Bus Rank, terminal, Civic Centre, Pinetown Schools, Churches et

This solid flat is a perfect starter or Investment property. It comes with family bathroom, open plan lounge/kitchen (fitted), 2 bedrooms with bic's, fully burglar guarded and fully tiled, pre-paid electricity in a secure block of flats,

Don't delay, secure your viewing appointment ASAP.

Features

Interior		Exterior		Sizes	
Bedrooms	2	Carports / Parkings	1	Floor Size	46m ²
Bathrooms	1	Security	No		
Kitchens	1	Pool	No		
Recep. Rooms	1	Views	False		
Furnished	No				