

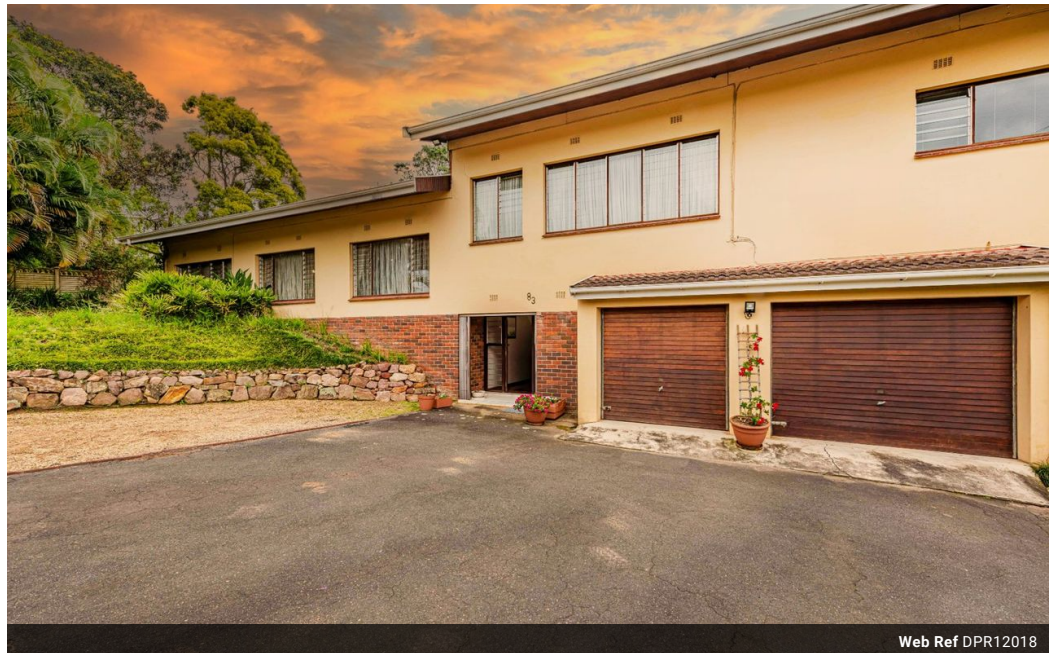


**Anne Heyes**  
 083 9635330  
 anneheyas@dpg.co.za

Contact Westville A-Team

031 2664343

1 Knightbridge,  
 16 Westville Road,  
 Westville



Web Ref DPR12018



**R2,595,000**

3 3 2

**Monthly Bond Repayment** R26,785.29  
 Calculated over 20 years at 11% with no deposit.

**Transfer Costs** R123,320.00 **Bond Costs** R38,415.00  
 These calculations are only a guide. Please ask your conveyancer for exact calculations.

**Monthly Rates** R2,200

Welcome to your future oasis on Woodside Avenue

Welcome to your future oasis on Woodside Avenue – where lifestyle meets cozy charm. This delightful family home is perfectly situated near all the amenities you could dream of, including schools, shops, and easy access to highways. As you step through the front door, the entrance boasts high ceilings that invite an abundance of natural light, setting the stage for making priceless memories with your loved ones.

**Features**

<b>Pets Allowed</b>	Yes			
<b>Interior</b>		<b>Exterior</b>	<b>Sizes</b>	
Bedrooms	3	Garages	2	Land Size
Bathrooms	3	Carports / Parkings	2	1,629m <sup>2</sup>
Kitchens	1	Security	Yes	
Recep. Rooms	3	Dom. Accom.	1	
Studies	1	Pool	Yes	
Furnished	No	Views	False	