



**Denga Mukwevho**  
081 765 5618  
dengam@dpg.co.za



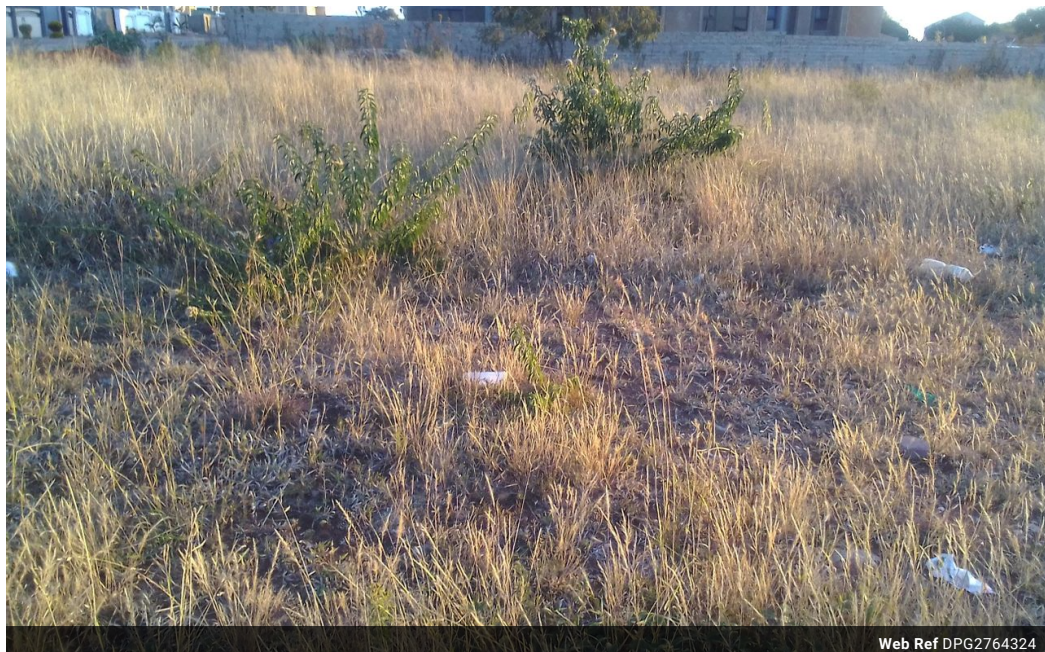
**Denga Mukwevho**  
081 765 5618  
dengam@dpg.co.za



Contact Polokwane

081 7655618

20 Hill Street  
Laddana  
Polokwane



Web Ref DPG2764324



**R870,000**

**Monthly Bond Repayment** R8,980.04  
Calculated over 20 years at 11% with no deposit.

**Transfer Costs** R28,244.00    **Bond Costs** R21,450.00  
These calculations are only a guide. Please ask your conveyancer for exact calculations.

### House for sale

A very well located corner stand in Serala view of 958 meter square which can be used for business purposes like town houses or accommodation and family house purpose.

this stand is located within Serala view suburb, a very beautiful and highly developed at the proximity of 4km away from Netcare Hospital, 5km away from Savana Mall, Serala view is a suburb along N1, you would love the view of this place, whilst viewing on the website, upon your interest do not hesitate to contact me for viewing.

### Features

