



**Christa Kilian**  
071 686 8871  
christakilian@dpg.co.za

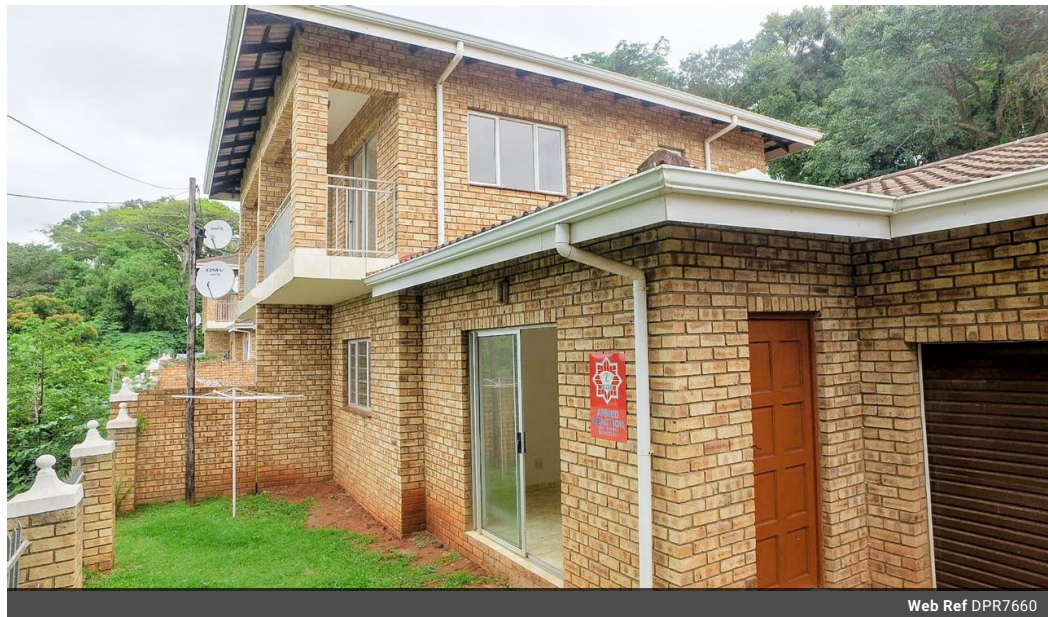


**Shireen Purmasur**  
Candidate Property Practitioner  
Registered with PPRA (FFC 098 656 1)  
083 601 3680  
shireen@dpg.co.za

Contact Queensburgh

031 4632533

Shop 2, 120 Stella Road  
Hillary  
Durban  
4094



Web Ref DPR7660



R899,000

🛏 3   🚿 2   🏠 1

**Monthly Bond Repayment** R9,279.37  
Calculated over 20 years at 11% with no deposit.

**Transfer Costs** R28,244.00   **Bond Costs** R21,450.00  
These calculations are only a guide. Please ask your conveyancer for exact calculations.

"Ocean's Serenade: Embrace the Vibrant Luxury in Port Shepstone"

Take a breather from the hustle and bustle of life and step into your new sanctuary in Anerley, Port Shepstone. Perfect for investors or the discerning homeowner, this spacious 3-bedroom, 2-bathroom sectional title is an unbeatable combination of convenience, style, and affordability, priced just right at R899 000.

Surrounded by the quintessentially South African charm, this home draws you in with an array of contemporary features. The very spacious living area provides ample space for relaxation and welcomes an abundance of natural light through the sleek aluminium windows. Easily entertain guests or simply unwind with your favourite book.

The collective vision of comfort and functionality extends to the exquisite bedrooms and pristine bathrooms. Further adding to the appeal are versatile parking spaces. Conveniently fit...

Features

<b>Pets Allowed</b>	Yes		
<b>Interior</b>		<b>Exterior</b>	
Bedrooms	3	Garages	1
Bathrooms	2	Carports / Parkings	1
Kitchens	1	Security	Yes
Recep. Rooms	2	Pool	No
Furnished	No	Views	False