



Barbara Lourens
082 8877 259
barbaral@dpg.co.za

Contact Pretoria Moot

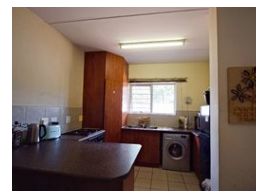
012 3323677

1170 Moulton Ave
Waverley
Pretoria
0186



SOLE MANDATE

Web Ref DPR18046



R799,000

🛏 2 🚿 1

Monthly Bond Repayment R8,247.19
Calculated over 20 years at 11% with no deposit.

Transfer Costs R25,898.00 **Bond Costs** R19,565.00
These calculations are only a guide. Please ask your conveyancer for exact calculations.

Monthly Levy R1,300

Step into your dream home in the heart of Annlin, Pretoria!

****SOLE AND EXCLUSIVE MANDATE**** - Investment opportunity Awaits

This stylish 2-bedroom apartment combines modern living with comfort, located in a highly sought-after area that's perfect for those seeking convenience and charm.

As you walk through the front door, you'll be greeted by a bright and airy open-plan living space that effortlessly connects the living room and kitchen. Expansive windows flood the space with natural light, creating a warm and welcoming atmosphere perfect for both relaxation and entertaining.

The kitchen is a true highlight, featuring sleek, contemporary appliances, generous counter space, and plenty of stylish cabinetry. Whether you're cooking a quick meal or hosting friends, this kitchen is designed to make every experience enjoyable and efficient.

Both bedrooms are thoughtfully designed with...

Features

Interior		Exterior		Sizes	
Bedrooms	2	Carports / Parkings	1	Floor Size	75m ²
Bathrooms	1	Security	No		
Kitchens	1	Pool	No		
Recep. Rooms	2	Views	False		
Furnished	No				

