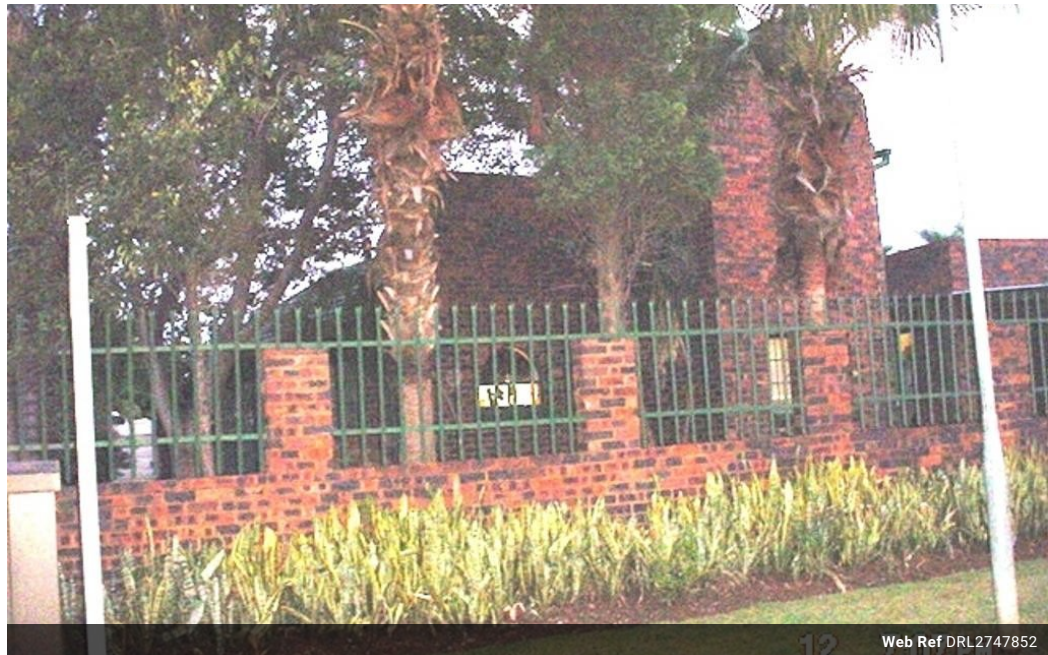


Hettie Chadinha
082 447 6021
hettiec@dpg.co.za

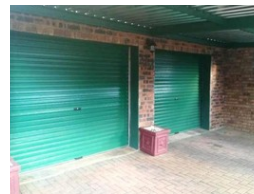
Contact Head Office - Dormehl Lite

012 0000000

1170 Moulton Avenue
Waverley
0184



Web Ref DRL2747852



R1,370,000

Monthly Bond Repayment R14,140.98
Calculated over 20 years at 11% with no deposit.

Transfer Costs R39,717.00 **Bond Costs** R27,105.00
These calculations are only a guide. Please ask your conveyancer for exact calculations.

4 2 2

DON'T MISS OUT ON THIS EXCELLENT PRICED PROPERTY!

Value for your money! This cozy clinker brick house is situated in Annlin, just next to Sinoville suburb. It consist of 3 bedrooms, loft upstairs, study, 2 bathrooms, open plan kitchen with living areas, gas stove, scullery, separate laundry room. It has modern finishes with beautiful tiles throughout. It also has a sparkling swimming pool with a lapa, garden, double garage and double carport. Near schools, hospital, and all other ammenities. Sub-tropical fast developing area! Easy access to all main routes.

Features

Pets Allowed	Yes		
Interior		Exterior	Sizes
Bedrooms	4	Garages	Floor Size
Bathrooms	2	Carports / Parkings	Land Size
Kitchens	1	Security	192m ²
Recep. Rooms	2	Pool	539m ²
Studies	1	Views	
Furnished	No		

