



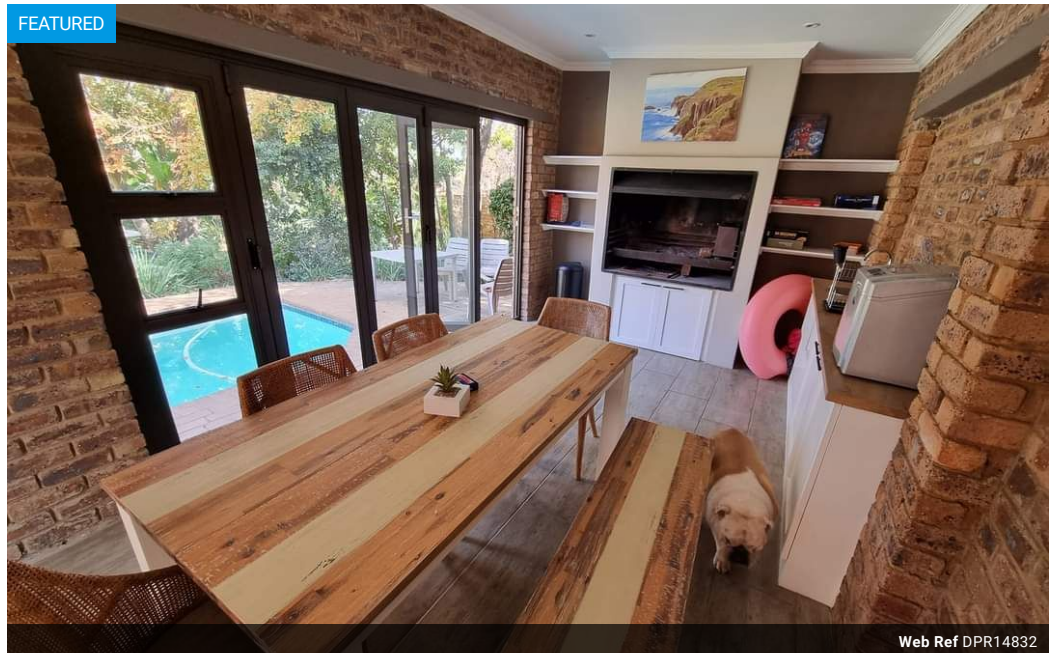
Angelique Wessels
071 434 4274
angeliquewessels@dpg.co.za

Contact Pretoria Moot

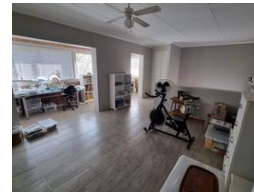
012 3323677

1170 Moulton Ave
Waverley
Pretoria
0186

FEATURED



Web Ref DPR14832



R2,649,000

3 Bedrooms 2 Bathrooms 2 Carports

Monthly Bond Repayment R27,342.67

Calculated over 20 years at 11% with no deposit.

Transfer Costs R129,807.00 **Bond Costs** R40,300.00

These calculations are only a guide. Please ask your conveyancer for exact calculations.

Monthly Rates R1,245

Gorgeous Home in Faerie Glen with All Extras, Solar, JOJO Tank, Pool and Entertainment Area

This Perfect, Well maintained home offers so much including solar, a water tank and separate entertainment area with pool!

Leave behind the concerns of load shedding in this stunning family home, located in the highly desirable Faerie Glen neighborhood. This distinctive property boasts a variety of features designed to elevate your living experience!

This gorgeous home offers an entertainment area suitable for Winter and Summer occasions, with a swimming pool and built in braai.

All 3 bedrooms are fitted with air conditioners and gracefully tiled in uniformity. There is a spacious, light additional room upstairs which could be perfect for an office from home, a gym or a separate living area.

The open plan lounge and dining creates easy flow living and has the bonus of a warm and cozy fireplace. The modern kitchen displays...

Features

Pets Allowed		Exterior		Sizes	
	Yes	Garages	2	Floor Size	249m ²
Interior		Carports / Parkings	2	Land Size	1,140m ²
Bedrooms	3	Security	No		
Bathrooms	2	Pool	Yes		
Kitchens	1	Views	False		
Recep. Rooms	2				
Studies	1				
Furnished	No				

