

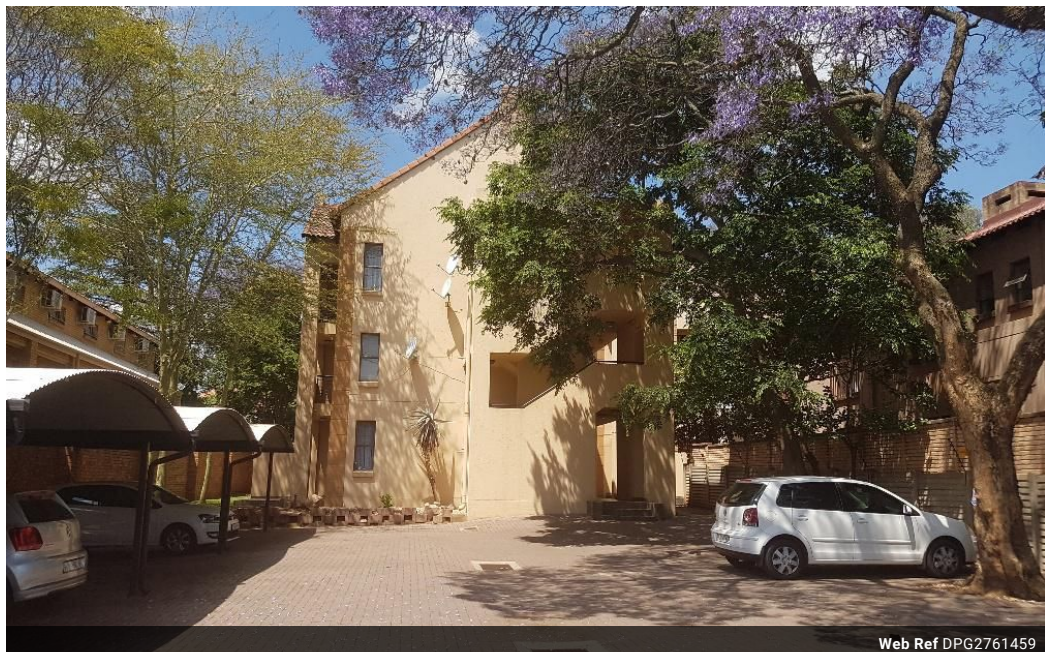


Maryke de Beer
Principal Property Practitioner
Registered with PPRA (FFC 097 612 5)
083 353 5912
marykedebeer@dpg.co.za

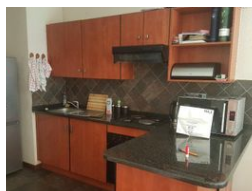
Contact Pretoria Moot

012 3323677

1170 Moulton Ave
Waverley
Pretoria
0186



Web Ref DPG2761459



R650,000



Monthly Bond Repayment R6,709.22
Calculated over 20 years at 11% with no deposit.

Transfer Costs R23,730.00 **Bond Costs** R17,680.00
These calculations are only a guide. Please ask your conveyancer for exact calculations.

Monthly Levy R1,500

1 Bedroom flat for sale

Beautifully modern ground floor unit with large patio walking out onto green garden. Situated in a quiet street of Hatfield.

Access controlled with safe parking. Walking distance to all amenities including university campus.

Open plan kitchen with dining nook. Prepaid electricity.

Features

Interior		Exterior		Sizes	
Bedrooms	1	Carports / Parkings	1	Floor Size	39m ²
Bathrooms	1	Security	Yes		
Kitchens	1	Pool	No		
Recep. Rooms	1				

