



Maryke de Beer
Principal Property Practitioner
Registered with PPRA (FFC 097 612 5)
083 353 5912
marykedebeer@dpg.co.za

Contact Pretoria Moot

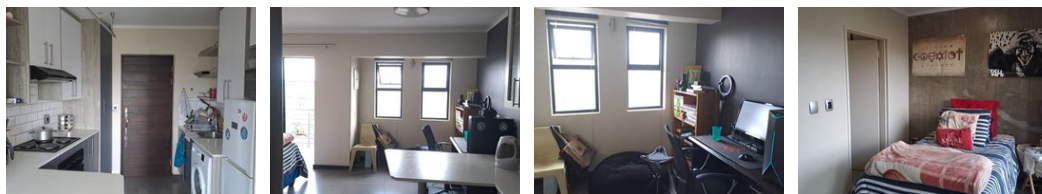
012 3323677

1170 Moulton Ave
Waverley
Pretoria
0186

UNDER OFFER



Web Ref DPR1274



R710,000



Monthly Bond Repayment R7,328.54
Calculated over 20 years at 11% with no deposit.

Transfer Costs R25,898.00 **Bond Costs** R19,565.00
These calculations are only a guide. Please ask your conveyancer for exact calculations.

Monthly Levy R900 **Monthly Rates** R400

Desirable Location

Modern studio unit situated in well maintained block and on a patrolled route to campus. Top notch security. 24 hours security with CCTV system, bio-metrics access controlled. Safe basement parking.

Fibre ready. Pre paid electricity and metered water.

Restaurant and laundry on site. Low levies and tenant in place for 2023.

Features

Interior		Exterior		Sizes	
Bedrooms	1	Carports / Parkings	1	Floor Size	30m ²
Bathrooms	1	Security	Yes	Land Size	30m ²
Kitchens	1	Pool	No		
Recep. Rooms	2	Views	False		
Furnished	No				