



Maryke de Beer
Principal Property Practitioner
Registered with PPRA (FFC 097 612 5)
083 353 5912
marykedebeer@dpg.co.za

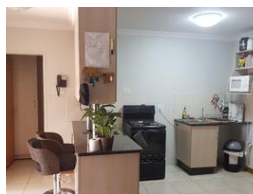
Contact Pretoria Moot

012 3323677

1170 Moulton Ave
Waverley
Pretoria
0186



Web Ref DPG2763743



R1,100,000

🛏️ 2 🚿 1

Monthly Bond Repayment R11,354.07
Calculated over 20 years at 11% with no deposit.

Transfer Costs R32,749.00 **Bond Costs** R25,220.00
These calculations are only a guide. Please ask your conveyancer for exact calculations.

Monthly Levy R1,800

2 Bedroom Flat For Sale

Spacious flat situated only 900 meters and a quick walk from the main campus of the university of Pretoria.

Centrally located to all amenities in a very popular area. Excellent rental opportunity. Access controlled with 24 hour security and safe basement parking.

Modern finishes. Double rooms with ample cupboard space, both with balconies.

Features

Interior		Exterior	
Bedrooms	2	Carports / Parkings	2
Bathrooms	1	Security	Yes
Kitchens	1	Pool	No
Recep. Rooms	0.5	Views	No

