



**Melisa Scheepers**  
067 069 6946  
melisascheepers@dpg.co.za



**Estean Bolleurs**  
067 069 6946

esteanbolleurs@dpg.co.za

Contact Pretoria Moot

012 3323677

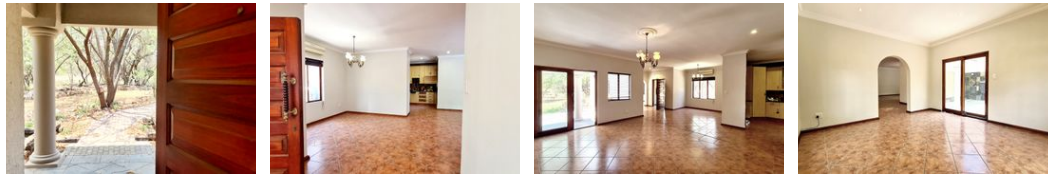
1170 Moulton Ave  
Waverley  
Pretoria  
0186

FEATURED



ON SHOW

Web Ref DPR17206



On Show

🕒 14:00 to 17:00

📅 Sunday, 06 April 2025

Directions

Meet me outside the estate

R3,495,000

🛏️ 3 🚿 2.5 🏠 2

**Monthly Bond Repayment** R36,074.98  
Calculated over 20 years at 11% with no deposit.

**Transfer Costs** R221,164.00 **Bond Costs** R47,840.00  
These calculations are only a guide. Please ask your conveyancer for exact calculations.

**Monthly Levy** R2,950 **Monthly Rates** R4,380

Bushveld Luxury Meets Everyday Living: Own Your Slice of Paradise in Leeuwfontein Estate!

Imagine waking up every day in the heart of the bushveld, surrounded by pristine nature, abundant wildlife, and pure tranquility. This isn't just a home; it's a lifestyle upgrade.

Here's why this property destroys the competition:

Unmatched Features:

Your Own Green Oasis: A lush garden with indigenous plants and roaming wildlife. This is the kind of backyard people pay to visit. You'll live in it.

Room for Everyone: 3 bedrooms that actually feel like a retreat. The main? Ensuite luxury with a private sitting room/study. The other two? Spacious and serviced by a full bathroom. Guests, family, or friends – everyone gets...

Features

**Pets Allowed** Yes

**Interior**

Bedrooms	3
Bathrooms	2.5
Kitchens	1
Recep. Rooms	3
Studies	2
Furnished	No

**Exterior**

Garages	2
Security	Yes
Pool	No
Views	False

**Sizes**

Floor Size	330m <sup>2</sup>
Land Size	1Ha

**Extras**

Security Estate Wildlife Estate