

Owen Dormehl
082 654 0024
owendormehl@dpg.co.za

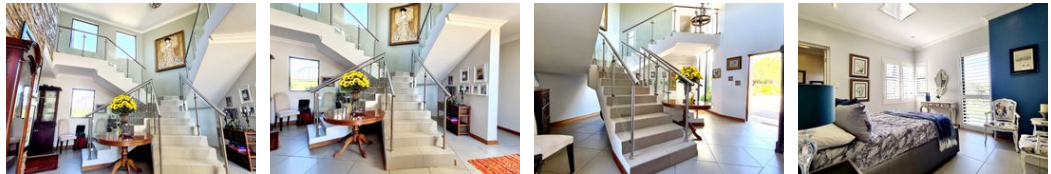
Contact Pretoria Moot
012 3323677
1170 Moulton Ave
Waverley
Pretoria
0186

FEATURED



SOLE MANDATE

Web Ref DPR16127



R7,495,000

 5
  6
  4

Monthly Bond Repayment R77,362.52

Calculated over 20 years at 11% with no deposit.

Transfer Costs R693,678.00 **Bond Costs** R75,285.00

These calculations are only a guide. Please ask your conveyancer for exact calculations.

Monthly Levy R4,685 **Monthly Rates** R2,140

Exquisite Estate Living: Luxurious 5-Bedroom Haven in Leeuwfontein

Welcome to your future sanctuary nestled within the prestigious Leeuwfontein estate!

This stunning residence exudes timeless elegance and offers an abundance of space and comfort. Boasting 5 spacious bedrooms, each accompanied by its own luxurious en-suite bathroom, privacy and convenience are paramount. Additionally, a convenient guest toilet downstairs ensures seamless entertaining.

Immerse yourself in productivity with three dedicated studies, ideal for remote work or scholarly pursuits. Step outside onto the inviting patio, where tranquil moments await amidst lush surroundings.

Indulge in the heart of the home: an expansive open-plan living room, dining area, and kitchen. Adorned with modern finishes and flooded with natural light, this space is perfect for both relaxation and entertaining. The kitchen is complemented by...

Features

Pets Allowed	Yes				
Interior		Exterior		Sizes	
Bedrooms	5	Garages	4	Land Size	11,300m²
Bathrooms	6	Carports / Parkings	4		
Kitchens	1	Security	Yes		
Recep. Rooms	3	Pool	Yes		
Studies	3	Views	True		
Furnished	No				