



Angelique Wessels
071 434 4274
angeliquewessels@dpg.co.za



Martin Van Deventer
Candidate Property Practitioner
Registered with PPRA (FFC 123 445 6)
078 263 0813
martinvd@dpg.co.za

Contact Pretoria Moot

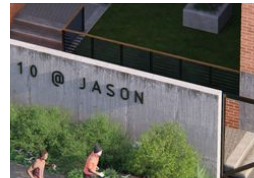
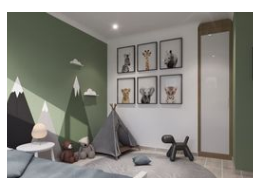
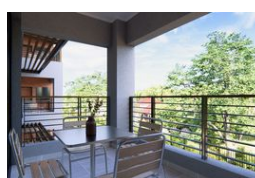
012 3323677

1170 Moulton Ave
Waverley
Pretoria
0186

NO TRANSFER DUTY



Web Ref DPR14712



R2,030,000

Monthly Bond Repayment R20,953.42
Calculated over 20 years at 11% with no deposit.

Transfer Costs R79,747.00 **Bond Costs** R34,625.00
These calculations are only a guide. Please ask your conveyancer for exact calculations.

🛏 2 🚿 2

STUDENT AND PROFESSIONAL NEW DEVELOPMENT - Dual Deluxe units available in 10 @ Jason.

The Latest Residential Development in Lynnwood Glen

Ideal for a discerning investor looking to capitalize on the immense demand for young professional accommodations in Pretoria East. Our latest residential development, located within the Menlyn Node, offers an unparalleled opportunity for property investors.

Situated within the boundaries of the Menlyn Node, the fastest growing development area in Pretoria East, 10 @ Jason boasts a strategic location ensuring high rental demand and robust capital appreciation. With key amenities and institutions just a stone throw away:

- 550m from Varsity College
- Less than 1km from St. Albans College
- 4 minutes from Cintocare.
- 6 minutes to Menlyn Maine

Features

Interior		Exterior		Sizes	
Bedrooms	2	Carports / Parkings	2	Floor Size	87m ²
Bathrooms	2	Security	Yes		
Kitchens	1	Pool	No		
Recep. Rooms	2	Views	False		
Furnished	No				

