



Maryke de Beer
Principal Property Practitioner
Registered with PPRA (FFC 097 612 5)
083 353 5912
marykedebeer@dpg.co.za

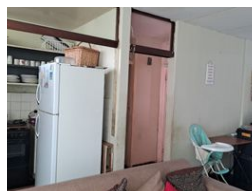
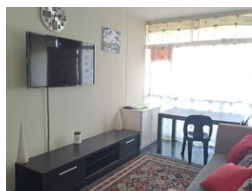
Contact Pretoria Moot

012 3323677

1170 Moulton Ave
Waverley
Pretoria
0186



Web Ref DPR5391



R360,000



Monthly Bond Repayment R3,715.88
Calculated over 20 years at 11% with no deposit.

Transfer Costs R16,806.00 **Bond Costs** R11,960.00
These calculations are only a guide. Please ask your conveyancer for exact calculations.

Monthly Levy R1,480 **Monthly Rates** R400

1 Bedroom flat for sale

Excellent rental generator! Situated in a no load shedding area. Large unit with a spacious bedroom, living and dining room area.

Well maintained block. Walking distance to town and surrounding areas. Low levies and rates.

Communal gardens and open space.

Features

Interior		Exterior		Sizes	
Bedrooms	1	Garages	1	Floor Size	58m ²
Bathrooms	1	Security	Yes	Land Size	58m ²
Kitchens	1	Pool	No		
Recep. Rooms	2	Views	True		
Furnished	No				