

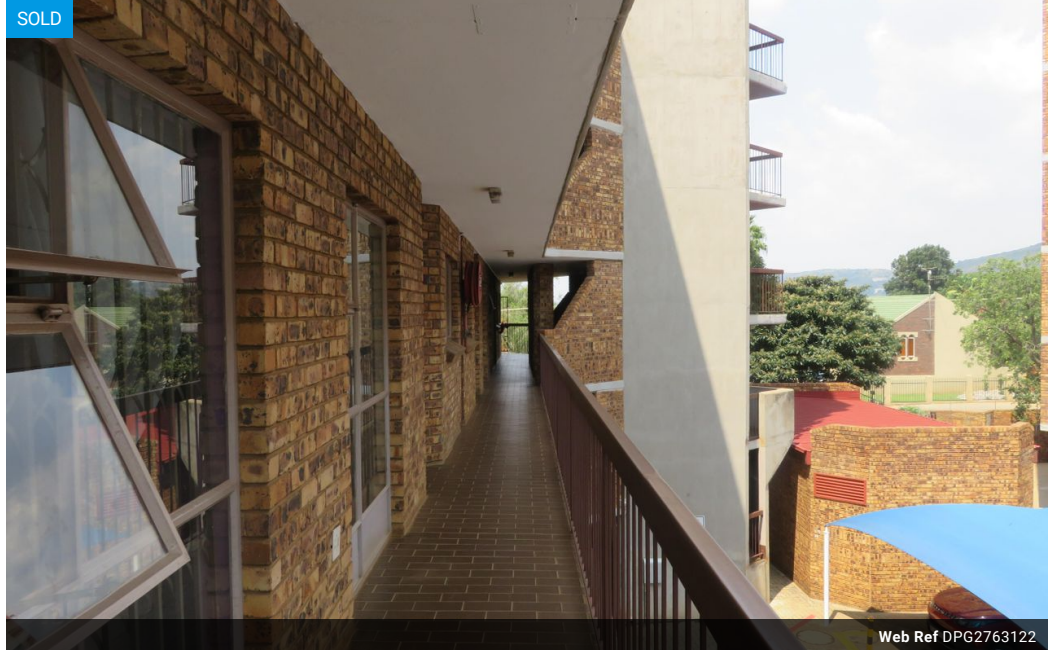


Olu-K
078 557 2716
oluk@dpg.co.za

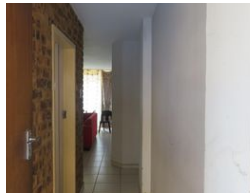
Contact Pretoria Moot

012 3323677

1170 Moulton Ave
Waverley
Pretoria
0186



Web Ref DPG2763122



R570,000

🛏 1 🚿 1

Monthly Bond Repayment R5,883.47
Calculated over 20 years at 11% with no deposit.

Transfer Costs R24,267.00 **Bond Costs** R19,304.50
These calculations are only a guide. Please ask your conveyancer for exact calculations.

Monthly Levy R1,274 **Monthly Rates** R380

Clean ,Spacious 2 bedroom in Pretoria North

This 2 bedroom is in one of the sort after blocks and streets in Pretoria North. Quite ,clean and well managed . Well positioned and close to amenities .Affordable rates and levies.

The 2 bedrooms are very spacious, and the bathroom and toilet are separate.

Features

Interior		Exterior		Sizes	
Bedrooms	1	Carports / Parkings	1	Floor Size	76m ²
Bathrooms	1	Pool	No		
Kitchens	1				
Recep. Rooms	1				

