



Angelique Wessels
071 434 4274
angeliquewessels@dpg.co.za



Quintin Wessels
084 353 7992

quintinwessels@dpg.co.za

Contact Pretoria Moot

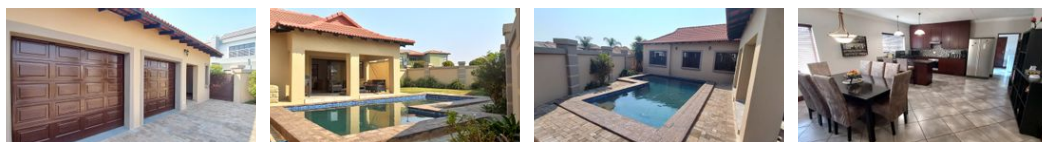
012 3323677

1170 Moulton Ave
Waverley
Pretoria
0186

FEATURED



Web Ref DPR12572



R3,750,000

5 Bedrooms, 3 Bathrooms, 2 Carports

Monthly Bond Repayment R38,707.06
Calculated over 20 years at 11% with no deposit.

Transfer Costs R251,382.00 **Bond Costs** R49,725.00
These calculations are only a guide. Please ask your conveyancer for exact calculations.

Monthly Levy R1,308

Spacious Spectacular Home & Flatlet - URGENT RELOCATION SALE!!

URGENT SALE!!! MASSIVE FLATLET!! Discover an exceptional opportunity for refined living in this captivating dual-dwelling estate, situated in the prestigious Savannah Country Estate! Boasting two impeccably designed residences, this property offers a harmonious blend of luxury, functionality, and versatility.

The main house welcomes you with grandeur, featuring a formal lounge and entertainment area seamlessly connected to a spacious covered patio, perfect for hosting gatherings or enjoying serene moments. A separate TV lounge provides a cozy retreat for relaxation and entertainment. Upon entry, the grandeur is palpable in the double-front-door entrance hall, leading to a well-appointed kitchen with wrap-around units, a dining area, and an occasional seating corner, ideal for both culinary enthusiasts and social...

Features

Pets Allowed	Yes		
Interior		Exterior	
Bedrooms	5	Garages	2
Bathrooms	3	Carports / Parkings	4
Kitchens	2	Security	Yes
Recep. Rooms	5	Pool	Yes
Studies	1	Views	False
Furnished	No		
		Sizes	
		Floor Size	439m ²
		Land Size	904m ²

Extras

Water Tanks Waterproofing Generator swimming pool Flatlet Covered Patio Office

