



**Barbara Lourens**  
082 8877 259  
barbaral@dpg.co.za

Contact Pretoria Moot

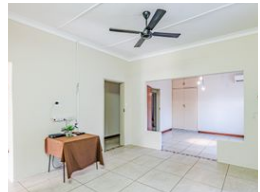
012 3323677

1170 Moulton Ave  
Waverley  
Pretoria  
0186



SOLE MANDATE

Web Ref DPR17346



**R2,100,000**

6.5 4

**Monthly Bond Repayment** R21,675.96  
Calculated over 20 years at 11% with no deposit.

**Transfer Costs** R83,947.00 **Bond Costs** R34,625.00  
These calculations are only a guide. Please ask your conveyancer for exact calculations.

**Monthly Rates** R803

**Call On All Investors – House with 3 Flats - Multi-Income Streams**

This Property is an investor's Dream.  
Solar used by all Units  
Borehole used by all Units no Tshwane water

Main House Offers:  
Sitting Room  
Dining Room  
Big Kitchen  
2 bedrooms  
2 bathrooms  
Entertainment area with braai  
The main bedroom has a lovely en-suite bathroom.  
Rental Income: + R 9 000 pm

The Main House is subdivided to accommodate:  
FLAT 1:  
Sitting Room  
Kitchen

**Features**

Pets Allowed		Interior		Exterior		Sizes	
	Yes	Bedrooms	6.5	Carports / Parkings	6	Floor Size	353m <sup>2</sup>
		Bathrooms	4	Security	Yes	Land Size	1,347m <sup>2</sup>
		Kitchens	3	Dom. Accom.	1		
		Recep. Rooms	4	Pool	No		
		Furnished	No	Views	False		

