



Caroline De Beer
082 414 3963
carolinedebeer@dpg.co.za

Contact Head Office - Dormehl Lite

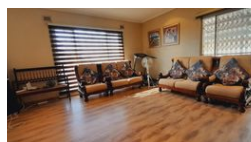
012 0000000

1170 Moulton Avenue
Waverley
0184

FEATURED



Web Ref DPR14829



R2,650,000

🛏 7 🚿 5

Monthly Bond Repayment R27,352.99
Calculated over 20 years at 11% with no deposit.

Transfer Costs R129,887.00 **Bond Costs** R40,300.00
These calculations are only a guide. Please ask your conveyancer for exact calculations.

Monthly Levy R1 **Monthly Rates** R1,538 **Special Levy** R2

PRICED DROPPED FOR A QUICK SALE!!!! Calling Property Investors!!

This is a income generating opportunity. You get three in one! Just a reminder that this has to be sold as a going concern. There are 3 leases in place, and they are very good tenants. Main house is living there since 2016. It Offers the main house, plus 2 separate flatlets.

It comprises of the following:

Main House: Lounge, Dining Room, Kitchen, 3 Bedrooms, 2 Bathrooms, One MES. Covered Carport for 2 Cars. Main house and flat no 1 share the same entrance. Security gates and Burglar Guards.

Flat No. 1: Lounge Open Plan to Dining room and Kitchen. Lounge area is Tiled with Hob + Fan and UCO. 1.5 Bedrooms are Tiled with BIC and the smaller room has own entrance. 1 Bathroom, Shower, Basin and Toilet. Plus, 2 Open Parking. Burglar Guards and Security Gates.

Flat no 2: Lounge, Open Plan to Kitchen and Dining Room area,...

Features

Pets Allowed	Yes		
Interior		Exterior	Sizes
Bedrooms	7	Carports / Parkings	7
Bathrooms	5	Security	No
Kitchens	3	Pool	No
Recep. Rooms	6	Views	False
Furnished	No		
Extras			
Above Road			
			Floor Size 350m ²
			Land Size 1,137m ²

