



**Chantelle Sampson**  
068 038 2450  
chantellesampson@dpg.co.za

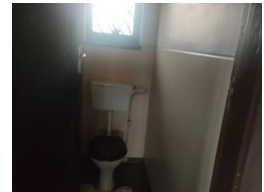
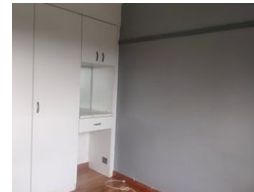
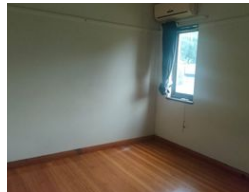
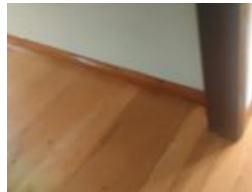
Contact Queensburgh

031 4632533

Shop 2, 120 Stella Road  
Hillary  
Durban  
4094



Web Ref DPR7786



**R1,550,000**

2   1

**Monthly Bond Repayment** R15,998.92  
Calculated over 20 years at 11% with no deposit.

**Transfer Costs** R47,285.00   **Bond Costs** R28,990.00  
These calculations are only a guide. Please ask your conveyancer for exact calculations.

**Monthly Rates** R816

older style home

If you are looking for an older style home then this double-storey 2-bedroom house situated in Northdene is just the home for you.

It has a lot of potential and features a spacious living room with hardwood floors and a cozy fireplace.

A fitted kitchen with a scullery, separate toilet and family bathroom, aircon in both bedrooms and a covered veranda to relax on after a hard day's work, an alarm system as well as a Blue Security camera monitoring the road on both sides of the property.

Close to all amenities, schools, quick access to the M7 as well as the taxi and bus routes.

### Features

<b>Pets Allowed</b>	Yes				
<b>Interior</b>		<b>Exterior</b>		<b>Sizes</b>	
Bedrooms	2	Carports / Parkings	5	Land Size	820m <sup>2</sup>
Bathrooms	1	Security	Yes		
Kitchens	1	Pool	No		
Recep. Rooms	2	Views	False		
Furnished	No				