

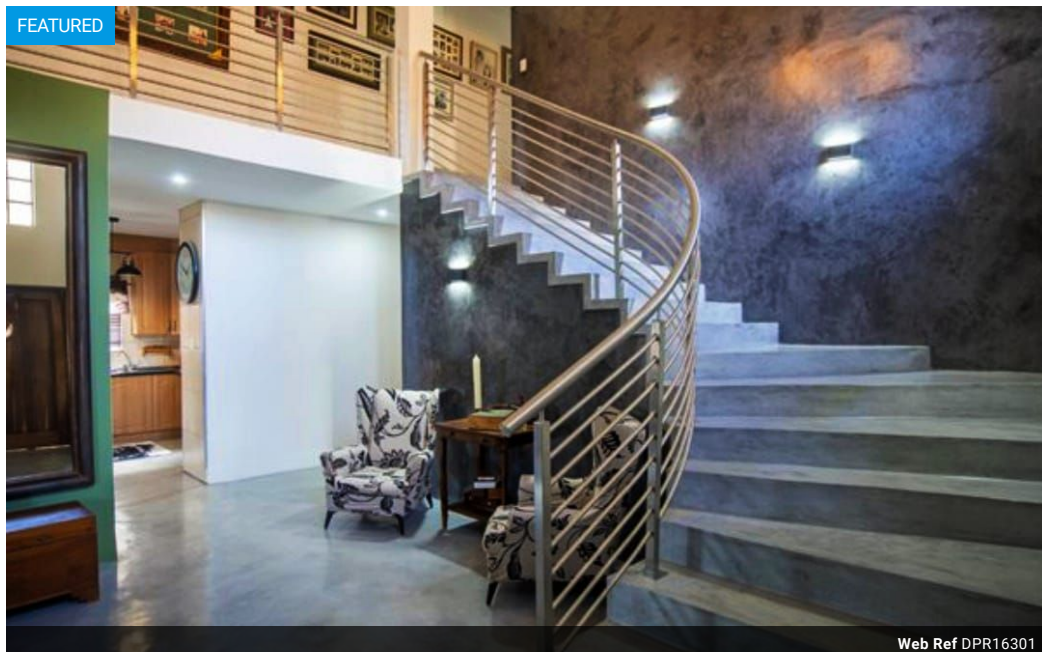


Celia Kotze
083 442 8016
celiakotze@dpg.co.za

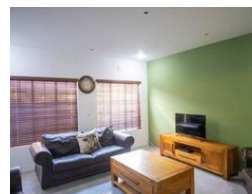
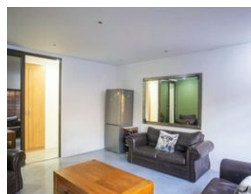
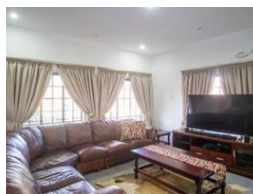
Contact Rustenburg

014 5942402

Mystic Blue Office Park
220 Beyers Naude Drive
Rustenburg
0229



Web Ref DPR16301



R4,066,000

🛏️ 5 🚿 4 🏠 2

Monthly Bond Repayment R41,968.78

Calculated over 20 years at 11% with no deposit.

Transfer Costs R290,934.00 **Bond Costs** R53,495.00

These calculations are only a guide. Please ask your conveyancer for exact calculations.

Monthly Rates R1,200

Exquisite Sophistication

This stunning property is for the discerned buyer. Spacious living and entertaining areas, extra large bedrooms and stunning bathrooms, the property boasts the following:

Downstairs:

- * 2 Lounges (one for the man of the house to convert into a man cave)
- * Kitchen (with large pantry), Scullery and Laundry - Gas stove
- * Open plan dining area
- * Guest bedroom with en suite bathroom
- * Access to garage

Upstairs:

- * 4 Bedrooms
- * 3 Bathrooms (2 en suite)
- * Main bedroom has walk in closet and huge pajama lounge or study

Features:

- * 6 Aircons
- * Domestic accommodation
- * Braai area

Features

Pets Allowed		Yes			
Interior		Exterior		Sizes	
Bedrooms	5	Garages	2	Floor Size	390m ²
Bathrooms	4	Carports / Parkings	6	Land Size	404m ²
Kitchens	1	Security	Yes		
Recep. Rooms	4	Dom. Accom.	1		
Studies	1	Pool	No		
Furnished	No	Views	False		