



Jaco Bender
071 565 1106
jacobender@dpg.co.za



Gugulethu Majosi
083 476 7764

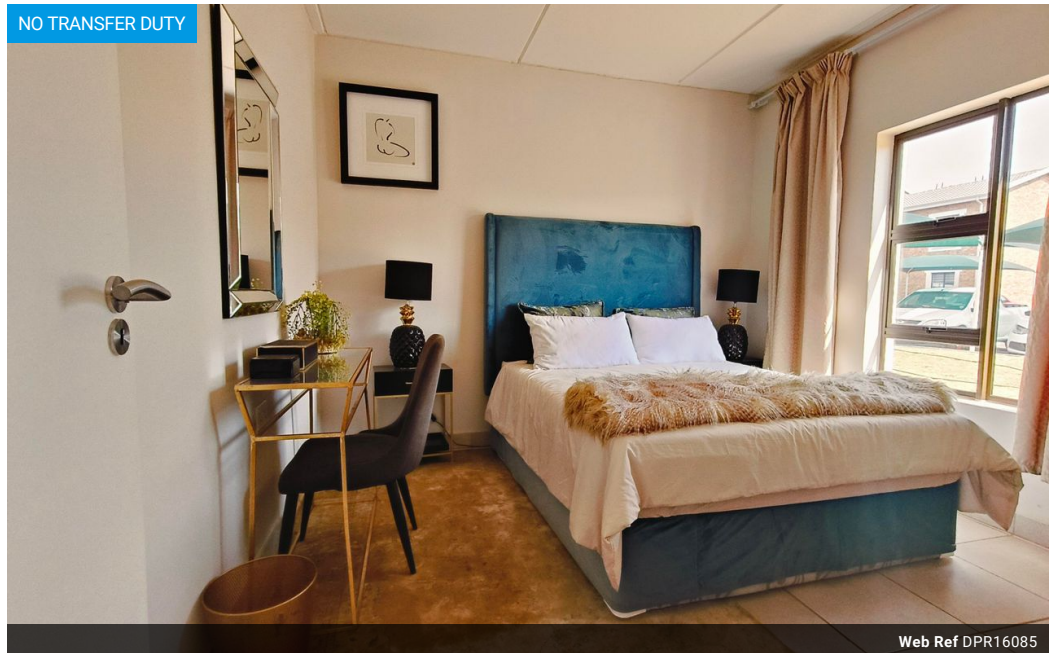
gugulethumajosi@dpg.co.za

Contact Dormehl Phalane Group
Pristine - JHB Northern &
Western Suburbs

071 5651106

Katherine Street
Sandton City
Johannesburg

NO TRANSFER DUTY



Web Ref DPR16085



R709,000

2 1

Monthly Bond Repayment R7,318.22

Calculated over 20 years at 11% with no deposit.

Transfer Costs R25,898.00 **Bond Costs** R19,565.00

These calculations are only a guide. Please ask your conveyancer for exact calculations.

Monthly Levy R450 **Monthly Rates** R350

Ready to Start Your Next Adventure? Find Your Dream Home at Idube Lifestyle Village!

Looking for a home that's as stylish as it is secure? Idube Lifestyle Village in Soweto has just what you need – modern 1 & 2-bedroom units starting at only R539,000. And guess what? You can MOVE IN TODAY! [VIEW HERE](#)

Why Idube Lifestyle Village?

Idube isn't just another place to live – it's where your best life begins! With awesome features, fantastic amenities, and a tight-knit community vibe, Idube Lifestyle Village is THE place to be.

Here's Why You'll Love It:

Chic 1 & 2 Bedroom Units: These cozy, stylish homes are perfect for singles, couples, or small families. At just R539,000, you're getting a modern, comfortable space with all the extras – and the best part? You can move in TODAY!

24/7 Security – Your Peace of Mind, Our Priority: With security that never sleeps, you can rest easy knowing you're always safe. Whether it's...

Features

Interior

Bedrooms	2
Bathrooms	1
Kitchens	1
Recep. Rooms	1
Furnished	No

Exterior

Carports / Parkings	1
Security	Yes
Pool	No
Views	False

Sizes

Floor Size	50m²
Land Size	6,500m²

