

# 3 Bedroom House Sold in Blythedale Beach



**Kosie Erasmus**  
 012 942 8555  
 kosieerasmus@dpgprop.co.za

Contact Head Office - Dormehl Lite

012 0000000

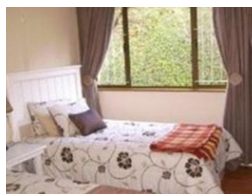
1170 Moulton Avenue  
 Waverley  
 0184

**SOLD**



SOLE MANDATE

Web Ref BLIT-0159



**R1,550,000**

**Monthly Bond Repayment** R15,998.92  
 Calculated over 20 years at 11% with no deposit.

**Transfer Costs** R47,285.00    **Bond Costs** R28,990.00  
 These calculations are only a guide. Please ask your conveyancer for exact calculations.

3    2    2

## 3 Bedroom House Sold in Blythedale Beach

Price has been dropped to sell!!! Glorious sea views with pool and lovely garden. This property offers space galore, with good security. Live the famous Village Lifestyle within 10 minutes walk from the beach.

### Features

<b>Pets Allowed</b>	Yes				
<b>Interior</b>		<b>Exterior</b>		<b>Sizes</b>	
Bedrooms	3	Garages	2	Floor Size	258m <sup>2</sup>
Bathrooms	2	Security	Yes		
Recep. Rooms	2	Dom. Accom.	1		
Furnished	No	Pool	Yes		
		Views	No		

