



Julia Sefuthi
068 216 8782
julias@dpg.co.za

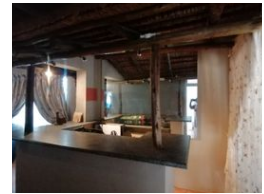
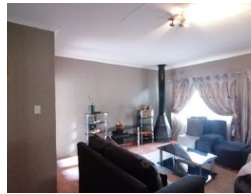
Contact Klerksdorp

083 2642457

8 De Wet Street
Stilfontein
2551



Web Ref DPR16598



R859,000

Monthly Bond Repayment R8,866.50
Calculated over 20 years at 11% with no deposit.

Transfer Costs R28,244.00 **Bond Costs** R21,450.00
These calculations are only a guide. Please ask your conveyancer for exact calculations.

4 2.5 2

A Property Which Can Easily Be Turned Into A Guesthouse

This big property standing on a big stand can easily be turned into a guesthouse or it is suitable for a big family. The boasts 4 bedrooms, main bedroom with own full en-suite bathroom, the second bathroom offers a bath, a basin and a separate toilet. The house further offers a spacious kitchen to cook meals for the whole family and friends, a laundry, a lounge, a dining room, TV room, a study or office, a big entertainment area with a bar and own toilet. Outside is a Lapa with built-in braai area, a swimming pool, a double garage which has a space for storage upstairs. Please note that the ceilings will be painted and the swimming pool is working; but the current owner is not using it. Call today to book your viewing appointment and call this beautiful place your new home.

Features

Pets Allowed	Yes		
Interior		Exterior	Sizes
Bedrooms	4	Garages	Floor Size
Bathrooms	2.5	Carports / Parkings	288m ²
Kitchens	1	Security	Land Size
Recep. Rooms	3	Pool	14m ²
Studies	1	Views	
Furnished	No		

