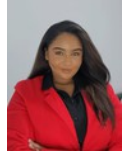




**Stacy Fernandez**  
069 354 3613  
stacy.f@dpg.co.za



**Kaylyn Olivier**  
079 463 3244  
kaylynolivier@dpg.co.za

Contact Head Office - Dormehl Lite

012 0000000

1170 Moulton Avenue  
Waverley  
0184



Web Ref DPR17098



**R3,195,000**

3 2

**Monthly Bond Repayment** R32,978.42  
Calculated over 20 years at 11% with no deposit.

**Transfer Costs** R183,829.00 **Bond Costs** R44,070.00  
These calculations are only a guide. Please ask your conveyancer for exact calculations.

**Monthly Levy** R2,000 **Monthly Rates** R1,800

**WELCOME TO THE EPITOME LUXURY OF LIVING.**

Dormehl Phalane Property Group welcomes you to the epitome luxury of living! This exquisite penthouse apartment is a true work of art, boasting top of the line finishes along with breath-taking views. The spacious and bright living areas are perfect for entertaining guests, while the contemporary kitchen is a chefs dream, featuring state of the art SMEG appliances and custom cabinetry. The bedrooms are a private oasis with its own lighting and chimney. This modern apartment has been enhanced by owners installing aircons, blinds and additional cupboard space. Fibre , Wifi ,Tv unit and downlighting in the living area as well as all bedrooms. The apartment comes with a spacious store room and 2 undercover parkings. It has all the luxury communal facilities available. Along with this luxury estate you can bring your fur friend/s...

**Features**

<b>Pets Allowed</b>	Yes				
<b>Interior</b>		<b>Exterior</b>		<b>Sizes</b>	
Bedrooms	3	Carports / Parkings	2	Floor Size	139m <sup>2</sup>
Bathrooms	2	Security	Yes		
Kitchens	1	Pool	Yes		
Recep. Rooms	2	Views	True		
Furnished	No				