



Logie Naidoo
082 455 6857
logienaidoo@dpg.co.za

Contact KZN North

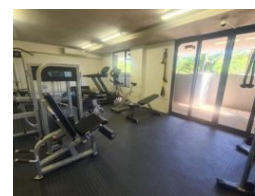
031 3500430

A1 Almil Centre
47 Ashley Avenue
Glenashley

FEATURED



Web Ref DPR16418



R2,595,000

2 2

Monthly Bond Repayment R26,785.29
Calculated over 20 years at 11% with no deposit.

Transfer Costs R123,320.00 **Bond Costs** R38,415.00
These calculations are only a guide. Please ask your conveyancer for exact calculations.

CALLING ALL INVESTORS - JUST LISTED - APARTMENT IN CORAL POINT SIBAYA SELLING BELOW MARKET VALUE!

EXCELLENT INVESTMENT OPPORTUNITY!

Take advantage of this well-lit airy apartment consisting of 2 bedrooms with 2 bathrooms, open plan kitchen lounge/dining room. Comes with 2 under cover parkings plus storage facility.

Well secure with 24 hours access control.

Gymnasium and laundromat in the building.

Excellent value @ R2595 000. Market value is R3650 000.

Hurry this won't last long.

For viewing appointment, please contact Logie Naidoo.

Features

Interior		Exterior	
Bedrooms	2	Carports / Parkings	2
Bathrooms	2	Security	Yes
Kitchens	1	Pool	Yes
Recep. Rooms	1	Views	True
Furnished	No		