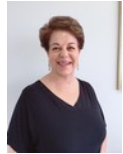




Odette Fourie
076 540 4090
odettefourie@dpg.co.za



Oriana Honeywill
083 776 4646

orianahoneywill@dpg.co.za

Contact KZN North

031 3500430

A1 Almil Centre
47 Ashley Avenue
Glenashley



Web Ref DPR16903



R7,300,000

2 3

Monthly Bond Repayment R75,349.75
Calculated over 20 years at 11% with no deposit.

Transfer Costs R672,228.00 **Bond Costs** R75,285.00
These calculations are only a guide. Please ask your conveyancer for exact calculations.

Behold "The Regal Vista Retreat": A Splendid Jewel amongst Pristine Urban Skies in Umhlanga Ridge

Prepare for an opulent lifestyle befitting the connoisseurs of luxury and style. Welcome to our prestigious listing, an unabashed display of refinement and sophistication nestled in the lofty heights of Umhlanga Ridge, Durban. A beautifully minted 2-bedroom, 3-bathroom apartment crafted for the discerning. This home will be your personal sanctuary with a magical touch of class valued at ZAR 7,300,000.

The palatial appeal of the property begins from the impressive foyer that leads into a meticulously adorned living area. Natural light dances on the lush interiors, designed with a simplistic elegance that captivates the senses. Each of the bedrooms is a statement of plush comfort, featuring generous space that paints a perfect canvas for your personal style. Resonating the same elegance, the luxe bathrooms are sanctuaries of...

Features

Interior		Exterior		Sizes	
Bedrooms	2	Carports / Parkings	1	Floor Size	105m ²
Bathrooms	3	Security	Yes		
Kitchens	1	Pool	No		
Recep. Rooms	1	Views	True		
Furnished	No				