

**Kaylyn Olivier**  
079 463 3244  
kaylynolivier@dpg.co.za

Contact Head Office - Dormehl Lite

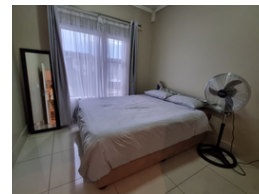
012 0000000

1170 Moulton Avenue  
Waverley  
0184

FEATURED



Web Ref DPR18745



**R1,750,000**



**Monthly Bond Repayment** R18,063.30  
Calculated over 20 years at 11% with no deposit.

**Transfer Costs** R58,039.00    **Bond Costs** R30,875.00

These calculations are only a guide. Please ask your conveyancer for exact calculations.

**Monthly Levy** R2,356.6    **Monthly Rates** R1,585.0

### Seasons Court Modern Apartment

Modern Apartment for Sale in Seasons Court, Umhlanga Ridge

Located in the vibrant Umhlanga Ridge area, Seasons Court offers contemporary living with stylish finishes and spacious design. This beautifully appointed apartment provides the perfect blend of comfort and modern living, ideal for those looking for a chic urban lifestyle.

Key Features:

- Open Plan Living: The apartment features a seamless open-plan layout, enhanced by high-gloss kitchen cupboards and sleek granite countertops, creating a chic and modern atmosphere.
- Master Bedroom: Spacious with an en-suite bathroom and built-in cupboards for ample storage.
- Second Bedroom: Generously sized, with built-in cupboards and an abundance of natural light.
- Guest Bathroom: Equipped with modern fixtures and fittings, ensuring a high standard of comfort.
- Private Balcony...

### Features

#### Interior

Bedrooms	2
Bathrooms	2
Kitchens	1
Recep. Rooms	1
Furnished	No

#### Exterior

Carports / Parkings	1
Security	Yes
Pool	Yes
Views	False

#### Sizes

Floor Size	73m <sup>2</sup>
------------	------------------

#### Extras

24 Hour Response