



Niki Boutsikaris
0647069107
nikiboutsikaris@dpg.co.za

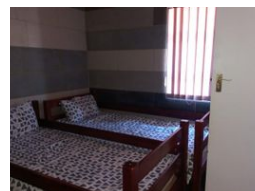
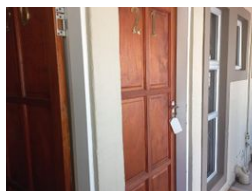
Contact Vanderbijlpark / Sasolburg

016 0042353

Shop 2,
The Palms Shopping Center,
Louis Trichardt Blvd,
Vanderbijlpark,
1911



Web Ref DPR9356



R3,700,000

🛏 0 🚿 0

Monthly Bond Repayment R38,190.97
Calculated over 20 years at 11% with no deposit.

Transfer Costs R245,882.00 **Bond Costs** R49,725.00
These calculations are only a guide. Please ask your conveyancer for exact calculations.

Plot for sale in Louisrus

Guest Lodge Potential!

This property features the following.....

BLOCK ONE:

- * 6 Bedrooms with tiled flooring + blinds
- * 6 Bathrooms
- * Kitchen
- * Board room
- * 2 Seperate toilets with a shower
- * 1 Bedroom with an en-suite

BLOCK TWO:

- * 1 Bedroom with an en-suite
- * 1 Small Hall
- * 2 Guest toilets

Features

Interior		Exterior	
Furnished	No	Security	No
		Pool	No
		Views	False

