



Maletsatsi Radebe
0760122832
maletsatsir@dpg.co.za

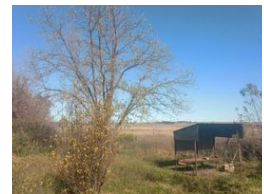
Contact Vanderbijlpark / Sasolburg

016 0042353

Shop 2,
The Palms Shopping Center,
Louis Trichardt Blvd,
Vanderbijlpark,
1911



Web Ref DPR10478



R2,365,000

🛏️ 0 🚿 0

Monthly Bond Repayment R24,411.26
Calculated over 20 years at 11% with no deposit.

Transfer Costs R102,752.00 **Bond Costs** R36,530.00
These calculations are only a guide. Please ask your conveyancer for exact calculations.

Monthly Rates R2,000

Double Delight: Two Homes on One Property!

Nestled in the picturesque area of Louisrus, this expansive property offers a unique opportunity for those seeking a tranquil and spacious living environment. Spanning over an impressive 7 hectares, this property consists of two houses, providing ample space and versatility. The main house features 5 bedrooms, ensuring plenty of room for a growing family or accommodating guests. The kitchen, lounge, and dining room create a harmonious flow, perfect for both everyday living and entertaining. The bathroom is equipped with a bathtub, toilet, and basin, offering a relaxing space for unwinding after a long day. Additionally, there is a separate toilet with a basin for added convenience. The second house on the property boasts 2 bedrooms, a kitchen, a lounge, and a bathroom. This additional dwelling provides an excellent opportunity...

Features

Pets Allowed	Yes		
Interior		Exterior	
Furnished	No	Security	Yes
		Pool	No
		Views	False

