



Patricia Bloem
0815281296
patriciab@dpg.co.za

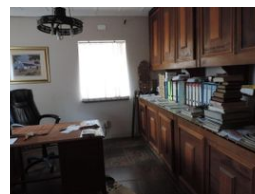
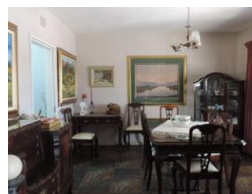
Contact Vanderbijlpark /
Sasolburg

016 0042353

Shop 2,
The Palms Shopping Center,
Louis Trichardt Blvd,
Vanderbijlpark,
1911



Web Ref DPR10063



R1,660,000

🛏️ 4 🚿 1 🏠 1

Monthly Bond Repayment R17,134.33

Calculated over 20 years at 11% with no deposit.

Transfer Costs R52,753.00 **Bond Costs** R30,875.00

These calculations are only a guide. Please ask your conveyancer for exact calculations.

Monthly Rates R800

Beautiful Plot in Miravaal Vanderbijlpark

Situated in upmarket Miravaal just off the main tarred road this 2,2 hectare welcomes you. The well appointed Double Storey house offers a spacious lounge with a fireplace, dining room, stunning ultra modern kitchen with granite tops, gas stove and loads of cupboard space. There is a work room/family room, and a study. Upstairs you will find 4 elegant bedrooms and an ultra modern bathroom. Comfort at its best!

Step outside and you will find a double garage, large workshop/store accommodation for workers and a Jo Jo Tank. The property enjoys 3 phase Eskom power and 2 strong boreholes. An ideal work from home setup. Give us a call to view this lovely property.

Features

Interior

Bedrooms	4
Bathrooms	1
Kitchens	1
Studies	1
Furnished	No

Exterior

Garages	1
Security	No
Pool	No
Views	False

Sizes

Land Size	21,000m²
-----------	----------