



**Sekhele Mahola**  
0605453166  
sekhelemahola@dpg.co.za

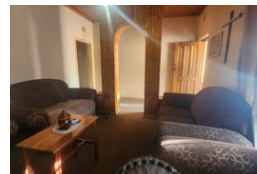
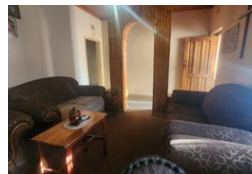
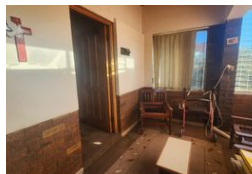
Contact Vanderbijlpark / Sasolburg

016 0042353

Shop 2,  
The Palms Shopping Center,  
Louis Trichardt Blvd,  
Vanderbijlpark,  
1911



Web Ref DPR17710



**R750,000**

**Monthly Bond Repayment** R7,741.41  
Calculated over 20 years at 11% with no deposit.

**Transfer Costs** R25,898.00    **Bond Costs** R19,565.00  
These calculations are only a guide. Please ask your conveyancer for exact calculations.

3    1.5    1

**Charming Family Home with Lapa**

This cozy home is thoughtfully designed to provide comfort and functionality for family living. The inviting lounge offers a warm space to relax, while the kitchen, featuring an outside laundry area, provides a practical setup for everyday tasks. Three well-sized bedrooms offer comfortable sleeping quarters, with a central bathroom and an additional separate toilet to accommodate the household's needs.

The exterior of the property is equally appealing, with a neat front yard that creates a welcoming entrance and a spacious backyard that enhances outdoor living. The backyard features a charming lapa, perfect for entertaining or enjoying leisurely afternoons. Additional amenities include a garage for secure parking and ample extra space for multiple cars. An outside bathroom adds convenience, especially during gatherings or when...

**Features**

<b>Pets Allowed</b>	Yes				
<b>Interior</b>		<b>Exterior</b>		<b>Sizes</b>	
Bedrooms	3	Garages	1	Land Size	685m <sup>2</sup>
Bathrooms	1.5	Carports / Parkings	1		
Kitchens	1	Security	Yes		
Recep. Rooms	1	Pool	No		
Furnished	No	Views	False		