



Mathilene Henn
 0722269985
 vanderbijl@dpg.co.za

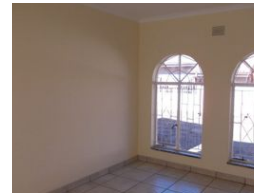
Contact Vanderbijlpark / Sasolburg

016 0042353

Shop 2,
 The Palms Shopping Center,
 Louis Trichardt Blvd,
 Vanderbijlpark,
 1911



Web Ref DPR8343



R640,000

3 3 1

Monthly Bond Repayment R6,606.01
 Calculated over 20 years at 11% with no deposit.

Transfer Costs R23,730.00 **Bond Costs** R17,680.00

These calculations are only a guide. Please ask your conveyancer for exact calculations.

Monthly Levy R1,200 **Monthly Rates** R420

NEVER TO BE REPEATED PRICE

This large open plan town house has been MORE THAN conservatively priced. Not often that you will gain 3 bedrooms with 3 bathrooms at this price! Has been repainted, refurbished and expanded and therefore presents a new virgin appearance. The stand enables you to erect a secure double carport as well as a splash pool to expand your visitors unique perception of your home! A wow to own!!

Situated in a developed suburb with all amenities in proximity.

Features

Interior		Exterior		Sizes	
Bedrooms	3	Garages	1	Floor Size	126m ²
Bathrooms	3	Security	No	Land Size	6,033m ²
Furnished	No	Pool	No		
		Views	False		