



Edward Letsele
084 850 2645
edwardletsele@dpg.co.za

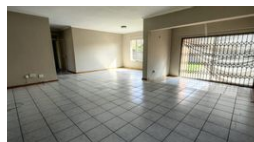
Contact Vanderbijlpark /
Sasolburg

016 0042353

Shop 2,
The Palms Shopping Center,
Louis Trichardt Blvd,
Vanderbijlpark,
1911



Web Ref DPR12649



R1,320,600

🛏 3 🚿 2 🚗 1

Monthly Bond Repayment R13,631.08

Calculated over 20 years at 11% with no deposit.

Transfer Costs R38,235.00 **Bond Costs** R27,105.00

These calculations are only a guide. Please ask your conveyancer for exact calculations.

Monthly Levy R1,850 **Monthly Rates** R1,525

Luxury Living: Your Dream Home!

Welcome to your dream home epitomizing luxurious living and contemporary elegance! This stunning property boasts an array of desirable features designed to enhance your lifestyle and provide ultimate comfort. Step into the heart of the home, where the spacious kitchen beckons with its breakfast nook, laundry area, and convenient dishwasher connection, catering to all your culinary needs. Adjacent, the dining room seamlessly flows into the open-plan lounge, creating an inviting space for entertaining or simply unwinding with loved ones.

Discover tranquility outdoors on the patio or veranda, ideal for alfresco dining or soaking up the sunshine. Indulge in the allure of three generously sized bedrooms, including a master suite complete with a walk-in closet and a luxurious en suite bathroom, offering a sanctuary of relaxation and...

Features

Interior		Exterior		Sizes	
Bedrooms	3	Garages	1	Land Size	1,095m²
Bathrooms	2	Carports / Parkings	2		
Kitchens	1	Security	Yes		
Recep. Rooms	2	Pool	Yes		
Furnished	No	Views	False		

