



**Mathilene Henn**  
 0722269985  
 vanderbijl@dpg.co.za

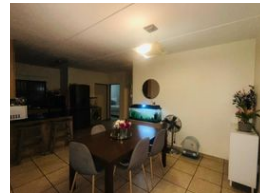
Contact Vanderbijlpark / Sasolburg

016 0042353

Shop 2,  
 The Palms Shopping Center,  
 Louis Trichardt Blvd,  
 Vanderbijlpark,  
 1911



Web Ref DPR17329



R959,000

3 Bedrooms 2 Bathrooms

**Monthly Bond Repayment** R9,898.69  
 Calculated over 20 years at 11% with no deposit.

**Transfer Costs** R30,412.00    **Bond Costs** R23,335.00  
 These calculations are only a guide. Please ask your conveyancer for exact calculations.

**Monthly Levy** R500    **Monthly Rates** R701    **Special Levy** R1,000

Good Sized Apartment in SE 8

Situated in the boomed off area in SE 8 is this very popular complex La Montania where this modern unit is found.

The unit offers you a open plan living, dining and kitchen area, there are 3 bedrooms with BIC, the main bedroom has an en-suit bathroom and the other two bedrooms have a bathroom that is situated in the hall way. This is great for a couple, small family or an investor. Contact to book your viewing!!

Features

Interior		Exterior		Sizes	
Bedrooms	3	Carports / Parkings	2	Floor Size	111m <sup>2</sup>
Bathrooms	2	Security	Yes		
Kitchens	1	Pool	No		
Recep. Rooms	2	Views	False		
Furnished	No				

