



Isabel Lombard
0848304864
isabellombard@dpg.co.za

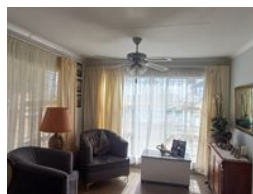
Contact Meyerton

016 0042352

24 Glynn Street
Rothdene,
Meyerton,
1961



Web Ref DPR16674



R1,390,000

2 2 1

Monthly Bond Repayment R14,347.42

Calculated over 20 years at 11% with no deposit.

Transfer Costs R40,317.00 **Bond Costs** R27,105.00

These calculations are only a guide. Please ask your conveyancer for exact calculations.

Monthly Rates R650

Prime Mixed Farming Property

This versatile property is ideally suited for mixed farming, featuring three ready-to-plant tunnels, perfect for vegetable cultivation. The tunnels are securely enclosed with an electric fence, which also surrounds the main house and farm structures, ensuring safety and privacy.

The property is fully equipped for a variety of livestock, with dedicated facilities for chickens, quails, and sheep, providing an excellent foundation for a sustainable farming operation. The property offers two well-appointed flats, each comprising a lounge, kitchen, bedroom, and bathroom. Flat 2 also boasts a spacious patio with a built-in braai, ideal for outdoor dining and entertainment.

In addition to the living accommodations, the property includes essential farming infrastructure, such as chicken houses, a storeroom or garage, and two carports,...

Features

Interior		Exterior		Sizes	
Bedrooms	2	Garages	1	Land Size	2Ha
Bathrooms	2	Carports / Parkings	10		
Kitchens	1	Security	No		
Recep. Rooms	2	Dom. Accom.	1		
Furnished	No	Pool	No		
		Views	False		