



**Jacqueline Lombaard**  
0836216762  
jacquelinelombaard@dpg.co.za



**Jeandre Coetzer**  
0663271196

jeandrecoetzer@dpg.co.za

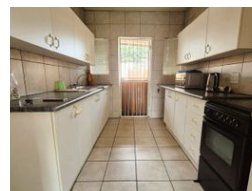
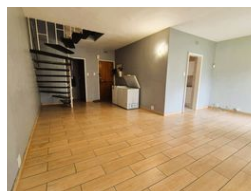
Contact Vereeniging

016 4232876

18 Klipriver Drive  
Three Rivers  
Vereeniging



Web Ref DPR18750



## R535,000

2 2.5 1

**Monthly Bond Repayment** R5,522.21  
Calculated over 20 years at 11% with no deposit.

**Transfer Costs** R21,217.00 **Bond Costs** R15,795.00

These calculations are only a guide. Please ask your conveyancer for exact calculations.

**Monthly Levy** R1,900 **Monthly Rates** R450

### Lovely Two Bedroom, Duplex Flat!

Nestled in the heart of Sonland Park, this delightful duplex townhouse offers comfort, convenience, and modern living. The open-plan living area seamlessly connects to a beautifully designed kitchen, creating a warm and inviting atmosphere. With two spacious bedrooms, two well-appointed bathrooms and downstairs guest toilet, this home is perfect for those seeking a cozy yet functional space. A single garage provides secure parking, while the charming small garden offers just the right balance of outdoor enjoyment without the hassle of high maintenance.

Situated close to a primary school and local shops, this property is ideal for first-time buyers or those looking to downsize. Its prime location ensures easy access to essential amenities, making everyday life more convenient. Whether you're starting fresh or simplifying your...

### Features

#### Interior

Bedrooms	2
Bathrooms	2.5
Kitchens	1
Recep. Rooms	1
Furnished	No

#### Exterior

Garages	1
Security	Yes
Pool	No
Views	False

#### Sizes

Floor Size	90m²
------------	------