



Byron Pillay
072 593 7447
byron.pillay@dpg.co.za



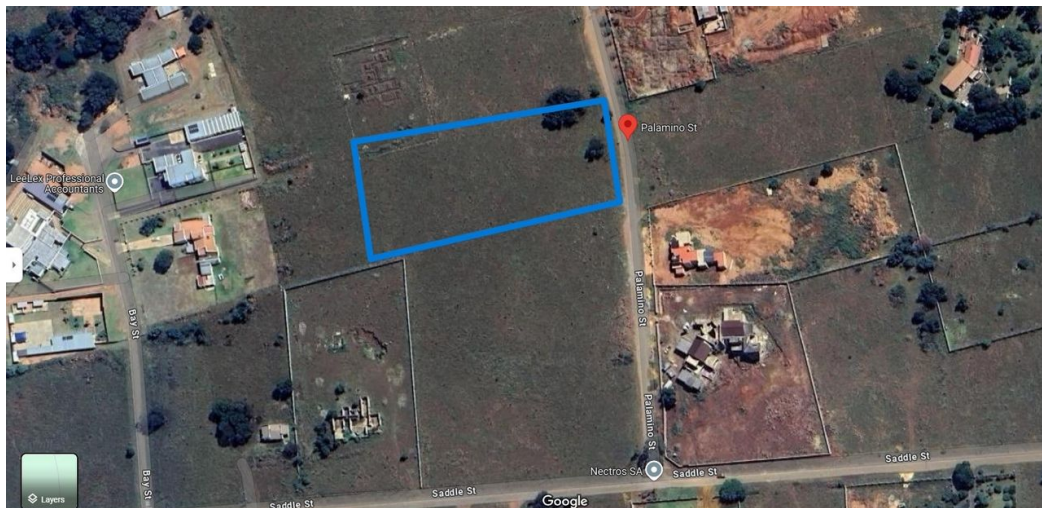
Kyle De Aguiar
Candidate Property Practitioner
Registered with PPRA (FFC 118 969 8)
072 137 4699
kyled@dpg.co.za

Contact DPG Alberton/JHB South

011 5539200

95 Victoria Street,
Oakdene,
Johannesburg,
Gauteng,
2190

UNDER OFFER



SOLE MANDATE

Web Ref DPR15504



R770,000

Monthly Bond Repayment R7,947.85

Calculated over 20 years at 11% with no deposit.

Transfer Costs R25,898.00 **Bond Costs** R19,565.00

These calculations are only a guide. Please ask your conveyancer for exact calculations.

LAND SALE-Prime Development Opportunity: Build Your Dream Home!- Walkerville Manor (De Deur)

This expansive 1.0035-hectare piece of land offers a unique opportunity to design and build your dream home on a blank canvas, surrounded by breathtaking views of the valley below.

Nestled in a quiet, developing area along Palamino Street, this plot offers the perfect blend of tranquility and convenience.

Key Features:

Size: 1.0035 hectares of prime real estate, perfect for those looking for space and freedom in their design.

Scenic Views: Overlooks the serene valley, providing beautiful landscapes and a peaceful atmosphere.

Convenient Location: Situated near major highways, the R82 and R85, making it easy to connect to key routes for commuting and travel.

Midvaal Municipality: Managed by the Democratic Alliance (DA), known for efficient service delivery and infrastructure maintenance, ensuring long-term investment...

Features

