



Lindi Honey
082 444 8996
lindhoney@dpg.co.za

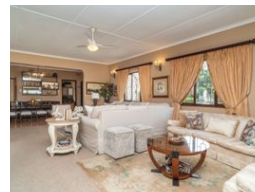
Contact Westville A-Team

031 2664343

1 Knightbridge,
16 Westville Road,
Westville



Web Ref DPR7413



R3,490,000

7 4 2

Monthly Bond Repayment R36,023.37

Calculated over 20 years at 11% with no deposit.

Transfer Costs R220,614.00 **Bond Costs** R47,840.00

These calculations are only a guide. Please ask your conveyancer for exact calculations.

Monthly Rates R2,298

Tucked away in a tranquil Cul-de-sac,

Welcome to your own little slice of heaven in the heart of Westville! Tucked away in a tranquil Cul-de-sac, this stunning family home is a hidden gem just waiting to be discovered. Not only does it boast rare flat land, but it's also conveniently located near Westville's most sought-after schools, shopping centers, sports clubs, and restaurants. And let's not forget, easy access to highways means you'll never be far from accessible routes to work. Step inside and prepare to be impressed by the space and natural light. With a whopping 450 square meters under roof and an expansive 4960 square meters of land, there's plenty of room to stretch out and make yourself at home. Oh, and did we mention the incredible sea views on a clear day? Just imagine sipping your morning coffee with gorgeous views. This home is as versatile as it...

Features

Pets Allowed	Yes			
Interior		Exterior		Sizes
Bedrooms	7	Garages	2	Land Size
Bathrooms	4	Carports / Parkings	2	4,960m ²
Kitchens	2	Security	Yes	
Recep. Rooms	3	Dom. Accom.	1	
Studies	1	Pool	Yes	
Furnished	No	Views	False	