



Jenny Grant
082 655 2117
jennygrant@dpg.co.za



Sheri Minter
031 266 9091
sheriminter@dpg.co.za

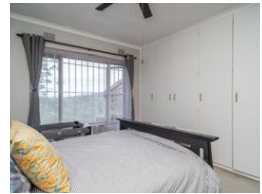
Contact Westville

031 2669091

Shop 1, Gordana Court,
22/26 Salisbury Avenue,
Westville



Web Ref DPR12671



R1,795,000

3 3 2

Monthly Bond Repayment R18,527.78
Calculated over 20 years at 11% with no deposit.

Transfer Costs R60,739.00 **Bond Costs** R30,875.00

These calculations are only a guide. Please ask your conveyancer for exact calculations.

Monthly Rates R1,300

TRANQUIL 3 BED FAMILY HOME

Zoned for Westville schools and accessible to highways, it ensures a prime location for families.

Step into tranquility as you enter the spacious dining area, seamlessly flowing into the inviting living space. From here, venture onto the expansive entertainment deck, offering views of Westville and the Palmiet River..

The generously sized kitchen includes a gas stove, electric oven, ample cupboard space, and space for a dishwasher and double fridge, catering to both functionality and style.

Three bedrooms, each with charming treetop views, provide comfortable accommodation. The residence comprises two bathrooms, featuring a full family bathroom with a toilet and shower, as well as a master bedroom ensuite.

In addition to these features, this home is equipped with an array of extras, enhancing both comfort and...

Features

Pets Allowed Yes

Interior

Bedrooms 3
Bathrooms 3
Kitchens 1
Recep. Rooms 2
Furnished No

Exterior

Garages 2
Carports / Parkings 2
Security Yes
Pool No
Views True

Sizes

Floor Size 103m²
Land Size 2,218m²

