



**Valencia Mkhathswa**  
061 021 3704  
valencia.m@dpg.co.za

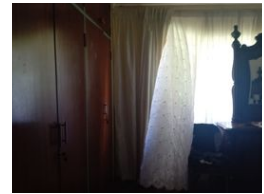
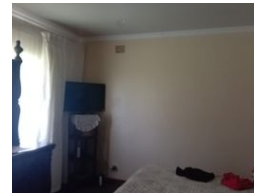
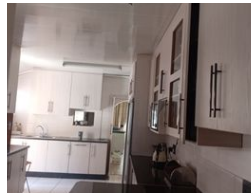
Contact Witbank

013 6961507

5 Woltemade Street,  
Witbank Ext 5,  
1035



Web Ref DPR18519



**R1,400,000**

🛏️ 4 🚿 1 🏠 1

**Monthly Bond Repayment** R14,450.64  
Calculated over 20 years at 11% with no deposit.

**Transfer Costs** R40,617.00    **Bond Costs** R27,105.00  
These calculations are only a guide. Please ask your conveyancer for exact calculations.

Spacious and Perfectly Located.

This beautiful home consist of four bedrooms, one bathroom, a modern kitchen, two living areas, double garage and a braai area. Please call me for viewing.

**Features**

<b>Pets Allowed</b>	Yes		
<b>Interior</b>		<b>Exterior</b>	
Bedrooms	4	Garages	1
Bathrooms	1	Security	No
Kitchens	1	Pool	No
Recep. Rooms	2	Views	False
Furnished	No		

