

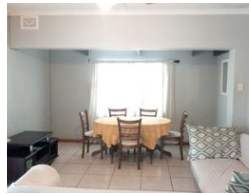
Stacy Fernandez
069 354 3613
stacy.f@dpg.co.za

Contact Head Office - Dormehl
Lite

012 0000000

1170 Moulton Avenue
Waverley
0184

3 Bedroom House To Let in Sydenham



R10,500 pm

Lease Period 6 months **Availability** Immediately **Deposit** R10,500
Annual Escalation Negotiable

 3  1

Fully Furnished 3 bedroom house to Let!

Dormehl Phalane Property group offers you this fully furnished 3 bedroom home to let in Sydenham suitable for corporate letting or a family. This 3 bedroom is fully fitted with lounge, dining and entrance hall. it has fully fitted kitchen with prepaid meters. One family bathroom with open parking area fully fenced it is a shared property. Immediate occupancy.

Features

Interior

Bedrooms	3
Bathrooms	1
Kitchens	1
Recep. Rooms	2
Furnished	No

Exterior

Carpports / Parkings	2
Security	No
Pool	No
Views	False

Sizes

Land Size	780m ²
-----------	-------------------