



**Nadine Matthee**  
082 377 7086  
nadinematthee@dpg.co.za

Contact Umhlanga

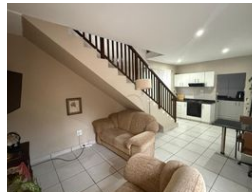
**031 5612346**

Shop 13A Granada Square  
16 Chartwell Drive  
Umhlanga

## FEATURED



Web Ref DPR18960



**R8,500 pm**

**Monthly Levy R1    Monthly Rates R1    Lease Period 12 months**

**Availability 01 May 2025**

**Deposit R8,500**

**Annual Escalation -**

**Lease Excludes:**  
Prepaid Electricity

1    1

## 1 Bedroom Unfurnished - Umhlanga (on Residential Property)

Secure Unfurnished 1 Bedroom Apartment  
\*Suit SINGLE/COUPLE PROFESSIONAL with 1 CAR  
Split Level - Bedroom & ens on Upper Level  
Kitchen, Scullery & Lounge/Dining on Lower level  
Regret NO Pets Permitted  
Available 1 MAY on Lease  
Rental includes Water, Prepaid Electricity  
Fibre Line in place

## Features

### Interior

Bedrooms	1
Bathrooms	1
Kitchens	1
Recep. Rooms	2
Furnished	No

### Exterior

Carports / Parkings	1
Security	Yes
Pool	No
Views	False

